



**London City Airport
Air Quality Monitoring
Strategy:
Quarterly Report
April to June 2018**

August 2018



Experts in air quality
management & assessment

Document Control

Client	London City Airport	Principal Contact	Tessa Simpson
---------------	---------------------	--------------------------	---------------

Job Number	J3140
-------------------	-------

Report Prepared By:	Dr Aidan Farrow and Dr Joshua Nunn
----------------------------	------------------------------------

Document Status and Review Schedule

Report No.	Date	Status	Reviewed by
J3140/2/F1	6 th August 2018	Final Report	Duncan Laxen

This report has been prepared by Air Quality Consultants Ltd on behalf of the Client, taking into account the agreed scope of works. Unless otherwise agreed, this document and all other Intellectual Property Rights remain the property of Air Quality Consultants Ltd.

In preparing this report, Air Quality Consultants Ltd has exercised all reasonable skill and care, taking into account the objectives and the agreed scope of works. Air Quality Consultants Ltd does not accept any liability in negligence for any matters arising outside of the agreed scope of works. The Company operates a formal Quality Management System, which is certified to ISO 9001:2008.

When issued in electronic format, Air Quality Consultants Ltd does not accept any responsibility for any unauthorised changes made by others.

When printed by Air Quality Consultants Ltd, this report will be on Evolve Office, 100% Recycled paper.

Air Quality Consultants Ltd
23 Coldharbour Road, Bristol BS6 7JT Tel: 0117 974 1086
12 Airedale Road, London SW12 8SF Tel: 0208 673 4313
aqc@aqconsultants.co.uk

Registered Office: 12 St Oswalds Road, Bristol, BS6 7HT
Companies House Registration No: 2814570

Contents

Executive Summary	2
1 Introduction	4
2 Assessment Criteria	5
3 Monitoring Methodology and Results	7
4 Summary and Conclusions	21
5 References	22
6 Glossary.....	23
A1 Appendix 1 – Nitrogen Oxides Results	24

Executive Summary

This document represents the April to June 2018 Quarterly Report for the Air Quality Monitoring Strategy (AQMS) that is operated on behalf of London City Airport. This programme measures concentrations of nitrogen dioxide (NO₂) and fine particles (the so called PM₁₀ fraction, i.e. particles that are less than 10 micrometres in diameter).

Monitoring is carried out at two automatic monitoring stations. One is situated on the roof of City Aviation House (LCA-CAH), whilst the other is to the north of Royal Albert Dock, adjacent to the Newham Dockside building (LCA-ND). These automatic sites are supplemented by a network of passive monitoring devices (nitrogen dioxide diffusion tubes) located at a further 16 sites in and around the Airport boundary.

The Government has set a number of air quality objectives to protect human health. These are based on monitoring carried out over the period of a calendar year. It is thus not possible to directly compare the concentrations measured over the period April to June 2018 with the objectives.

In some cases, these objectives refer to average concentrations of pollutants measured over the calendar year (the “annual mean”); in other cases they refer to the number of hours or days on which a specified pollutant concentration should not be exceeded (for example, no more than 35 days in each calendar year on which PM₁₀ concentrations exceed 50 µg/m³, and no more than 18 hours in each calendar year on which nitrogen dioxide concentrations exceed 200 µg/m³).

In addition to the objectives, the Government has established a set of descriptors for the 1-hour mean concentrations of nitrogen dioxide and 24-hour mean concentrations of PM₁₀. Air quality is defined by these descriptors as being ‘Low’, ‘Moderate’, ‘High’ or ‘Very High’.

Pollution concentrations measured in and around the Airport are associated with a wide range of sources at the local, regional, national and international scales. On occasions when pollution levels rise, these higher levels are often observed across the whole of London as a “regional pollution episode”. To assist with the interpretation of the results, pollution levels measured at other London monitoring sites are included in this report.

Nitrogen Dioxide

The period mean nitrogen dioxide concentration measured at the automatic station on the roof of City Aviation House was 27.3 µg/m³ (microgrammes per cubic metre); a lower concentration (23.0 µg/m³) was measured at the Newham Dockside site. The period mean concentrations at the City Aviation House and at Newham Dockside sites were both below the objective value (as set out above, the measured concentration over three months cannot be directly compared with the objective which relates to a calendar year). There were no recorded exceedances of the 1-hour mean objective value at either site. All hourly concentrations were classified as being within the ‘Low’ pollution band.

Concentrations of nitrogen dioxide at background sites, and at one roadside site, elsewhere in London over this period ranged from 16 to 37 $\mu\text{g}/\text{m}^3$, with similar patterns in levels as seen at the two London City Airport sites. There was a good correlation between observed peaks at the Airport sites and other London sites, suggesting that these occurrences were due to regional sources and changing weather conditions that affect the dispersion and dilution of pollutant emissions.

The period mean nitrogen dioxide concentrations measured at the diffusion tube sites ranged from 19 to 37 $\mu\text{g}/\text{m}^3$. At all of the 16 diffusion tube monitoring sites, measured concentrations were below the annual mean objective value of 40 $\mu\text{g}/\text{m}^3$ (however, as set out above, the measured concentration over three months cannot be directly compared with the objective, which relates to a calendar year).

Fine Particles (PM₁₀)

The period mean PM₁₀ concentration measured at the automatic station on the roof of City Aviation House was 21.6 $\mu\text{g}/\text{m}^3$ (microgrammes per cubic metre). This is well below the objective value of 40 $\mu\text{g}/\text{m}^3$ (however, as set out above, the measured concentration over three months cannot be directly compared with the objective, which relates to a calendar year). There was a single recorded exceedance of the 24-hour mean objective (compared with the 35 exceedances allowed in a calendar year). The majority (98.5%) of the running 24-hour mean concentrations were classified as 'Low', whilst running 24-hour mean concentrations were classified as 'Moderate' for the remaining 1.5% of the time. There were no running 24-hour mean concentrations within the 'High' or 'Very High' pollution bands.

Concentrations of PM₁₀ at background sites elsewhere in London over this period showed similar patterns as seen at the Airport site. In particular, there was a good correlation between observed peaks at the Airport site and other London sites, suggesting that these occurrences were principally due to regional sources and changing weather conditions that affect the dispersion and dilution of pollutant emissions.

1 Introduction

- 1.1 This document represents the April to June 2018 Quarterly Report for the Air Quality Monitoring Strategy (AQMS), operated on behalf of London City Airport (LCA).
- 1.2 The City Airport Development Programme (CADP) 1 planning application was granted planning permission by the Secretaries of State for Communities and Local Government and Transport in July 2016 following an appeal and public inquiry which was held in March / April 2016. Condition 57 of the CADP 1 planning permission requires that an Air Quality Monitoring Strategy be implemented on commencement of the development.
- 1.3 The AQMS, as defined within Condition 57, requires the operation of two automatic air quality monitoring stations, situated on the roof of City Aviation House and at Newham Dockside, and a network of nitrogen dioxide diffusion tubes, situated in and around the Airport site.
- 1.4 The AQMS is managed by Air Quality Consultants Ltd. (AQC) on behalf of London City Airport. Service support for the automatic monitoring stations is provided by Enviro Technology Services plc, with Ricardo Energy & Environment providing independent audit checks.
- 1.5 Chapter 2 of this Report sets out the various standards and guidelines against which air pollution concentrations should be compared. Chapter 3 describes the monitoring methodology and provides a summary of the measured concentrations in the April to June 2018 period with respect to these criteria, and compares the measured concentrations with other local monitoring sites.

2 Assessment Criteria

- 2.1 The Government has established a set of air quality standards and objectives to protect human health. The 'standards' are set as concentrations below which effects are unlikely even in sensitive population groups, or below which risks to public health would be exceedingly small. They are based purely upon the scientific and medical evidence of the effects of an individual pollutant. The 'objectives' set out the extent to which the Government expects the standards to be achieved by a certain date. They take account of economic efficiency, practicability, technical feasibility and timescale. The objectives for use by local authorities are prescribed within the Air Quality Regulations, 2000, Statutory Instrument 928 (2000) and the Air Quality (England) (Amendment) Regulations 2002, Statutory Instrument 3043 (2002). The objectives for nitrogen dioxide were to have been achieved by 2005, and continue to apply in all future years thereafter. The relevant objectives for this report are provided in Table 1.
- 2.2 The European Union has also set limit values for nitrogen dioxide and PM₁₀. Achievement of these values is a national obligation rather than a local one (Directive 2008/50/EC of the European Parliament and of the Council, 2008), and compliance can only be determined by the national monitoring network operated by Defra. The limit values are numerically the same as the UK objectives; the nitrogen dioxide limit values were to have been achieved by 2010 (The Air Quality Standards Regulations 2010 (No. 1001), 2010) and the PM₁₀ limit values were to be achieved by 2005.

Table 1: Relevant Air Quality Objectives

Pollutant	Time Period	Objective / Value
Nitrogen Dioxide	1-hour mean	200 µg/m ³ not to be exceeded more than 18 times a year
	Annual mean	40 µg/m ³
Fine Particles (PM₁₀)^a	24-hour mean	50 µg/m ³ not to be exceeded more than 35 times a year ^b
	Annual mean	40 µg/m ³

^a Measured by the gravimetric method.

^b Equivalent to a 90th percentile of 24-hour mean concentrations of 50 µg/m³.

- 2.3 In addition to the objectives, Defra has established a set of descriptors for the 1-hour mean values for nitrogen dioxide, classifying the concentrations in an index from 1 to 10 and thus labelling the levels as 'Low', 'Moderate', 'High' or 'Very High' (Defra, 2013). The banding is referred to as the Daily Air Quality Index (DAQI). The DAQI criteria are set out in Table 2.

Table 2: Daily Air Quality Index Bandings

Band	Index	Nitrogen Dioxide 1-hour Mean ($\mu\text{g}/\text{m}^3$)	PM ₁₀ 24-hour mean ($\mu\text{g}/\text{m}^3$) ^a
Very High	10	601 or more	101 or more
High	9	535 – 600	92 – 100
	8	468 – 534	84 – 91
	7	401 – 467	76 – 83
Moderate	6	335 – 400	67 – 75
	5	268 – 334	59 – 66
	4	201 – 267	51 – 58
Low	3	135 – 200	34 – 50
	2	68 – 134	17 – 33
	1	0 – 67	0 – 16

^a Reference equivalent. 24-hour values are 00:00 to 23:59.

3 Monitoring Methodology and Results

Automatic Monitoring Stations

3.1 Monitoring was carried out at two automatic stations as follows:

- City Aviation House (LCA-CAH): Nitrogen dioxide and PM₁₀.
- Newham Dockside (LCA-ND): Nitrogen dioxide.

The locations of the two automatic sites are shown in Figure 1.

3.2 The LCA-CAH automatic monitoring station measures PM₁₀ using a Rupprecht and Patashnick TEOM 1400 Particulate Monitor, whilst both automatic stations measure nitrogen dioxide using M200E TAPI chemiluminescence analysers. The data are stored as 15-minute mean concentrations. Before further processing and ratification the raw PM₁₀ concentrations have been adjusted to a “reference-equivalent” using the Volatile Correction Model (VCM), as recommended by Defra (2016). This adjusts the TEOM data using the “purge” concentration measured by an FDMS analyser, assuming this represents the volatile component that has been lost. A “VCM web portal” has been established that allows this correction to be derived from the mean of up to three, nearby FDMS analysers in the national network.

3.3 Independent site audits, conducted by Ricardo-E&E, confirmed that both automatic monitoring stations were operating above the minimum standards set for the national networks operated by Government. The last audit was carried out on 27th February 2018.

3.4 Ratification of the data has been based on calibration factors determined from the calibration reports, along with visual examination of the data and comparison with monitoring data from nearby national network background sites (Bexley, Bloomsbury and Eltham) (Defra, 2018). Any erroneous data have been flagged and removed from subsequent analysis. 1-hour, 24-hour, and period means have then been calculated.

3.5 Pollution concentrations measured at both automatic Airport monitoring stations are associated with a wide range of sources at the local, regional, national and international scales. On occasions when pollution levels rise, these higher levels are often observed across the whole of London as a “regional pollution episode”. To assist with the interpretation of the results, comparable data have been obtained from the national Air Quality Archive (Defra, 2018) for three background sites, Bexley, Bloomsbury and Eltham, and from the London Air Quality Network (KCL, 2018) for two sites within the London Borough of Newham at Wren Close, Canning Town (background) and Cam Road, Stratford (roadside).

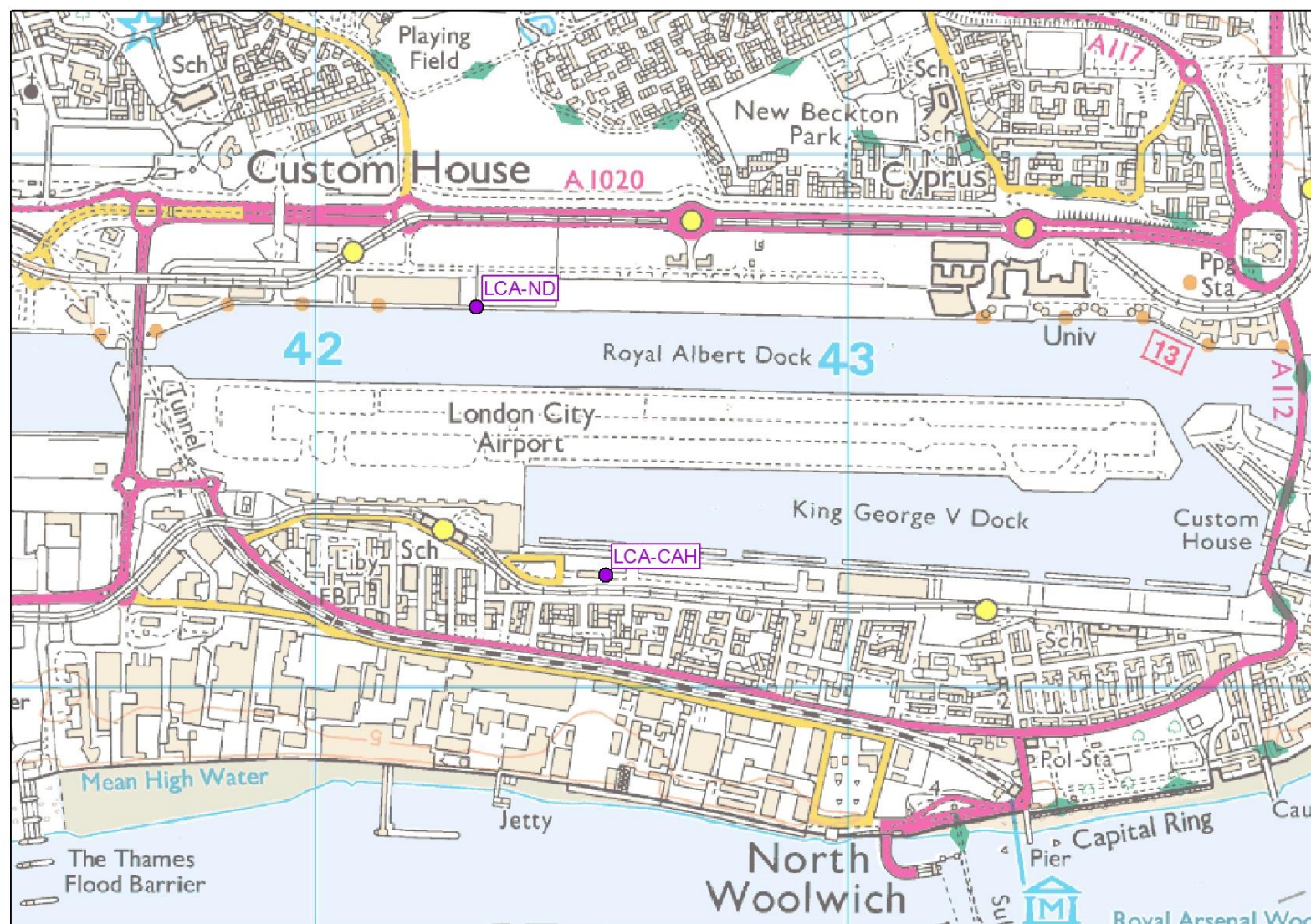


Figure 1: Automatic Monitoring Locations (purple dots). © Crown copyright and database right 2018. Ordnance Survey licence number 100046099.

Nitrogen Dioxide

- 3.6 The nitrogen dioxide results for the period April to June 2018 for the LCA-CAH and LCA-ND automatic monitoring stations are summarised in Table 3. The 1-hour mean data are also shown plotted in Figure 2. Data capture was high at both LCA-ND and LCA-CAH (above 90% at each site¹). It is not possible to compare the measured concentrations with the objectives, as these only apply to a period of a calendar year (a comparison with the objectives over the full 2018 calendar year will be provided in the Annual Report for 2018); however, the measured concentrations for the three month period at both sites were below the annual mean objective value of 40 µg/m³. The 1-hour mean objective value was not exceeded at either LCA-CAH or LCA-ND, i.e. there were no measured exceedances of 200 µg/m³ compared with the 18 exceedances allowed in a calendar year.

Table 3: Nitrogen Dioxide (NO₂) Data Summary for LCA-CAH and LCA-ND, April to June 2018^a

Pollutant	LCA-CAH	LCA-ND	Objectives
	NO ₂	NO ₂	
Maximum 1-Hour Mean	102.8 µg/m ³	100.8 µg/m ³	-
No. 1-Hour Mean > 200 µg/m ³	0	0	200 µg/m ³ ; no more than 18 exceedances
Period Mean	27.3 µg/m ³	23.0 µg/m ³	40 µg/m ³
Data Capture	95.6%	95.6%	-

^a Nitrogen oxides concentrations are provided in Appendix 1.

- 3.7 Table 4 includes the distribution of the 1-hour mean values into the different pollution bands (DAQI). All of the measured 1-hour mean nitrogen dioxide concentrations fell into the 'Low' pollution band during April to June 2018, at both monitoring sites.

¹ It is inevitable that a small amount of data will be "lost" in each year due to routine downtime for calibrations and site servicing.

Table 4: DAQI Bandings, April to June 2018

Band	Index	LCA-CAH	LCA-ND
Very High ^a	10		
High ^a	9		
	8		
	7		
Moderate ^a	6		
	5		
	4		
Low ^a	3		
	2	78	55
	1	2009	2032

^a Number of 1-hour values falling within band

- 3.8 Nitrogen dioxide concentrations for five monitoring sites across London for the period April to June 2018 are summarised in Table 5, and shown plotted in Figure 3. These sites range from central London (Bloomsbury and Eltham) to outer London (Bexley), with two in east London (Canning Town and Stratford). The measured period mean concentrations at London City Airport (27 $\mu\text{g}/\text{m}^3$ at LCA-CAH and 23 $\mu\text{g}/\text{m}^3$ at LCA-ND) were lower than that measured at Bloomsbury (37 $\mu\text{g}/\text{m}^3$) and higher than those at Eltham (16 $\mu\text{g}/\text{m}^3$) and Bexley (20 $\mu\text{g}/\text{m}^3$). The period mean concentration at Canning Town (23 $\mu\text{g}/\text{m}^3$) was similar to that at LCA-ND and that at Stratford (26 $\mu\text{g}/\text{m}^3$) was similar to that at LCA-CAH. These results are broadly consistent with the location of London City Airport between the areas of high concentrations in central London and lower concentrations towards the outskirts. The maximum 1-hour mean concentrations recorded at LCA-CAH and LCA-ND were lower than those at Bloomsbury, Canning Town and Stratford, but higher than those recorded at Bexley and Eltham.

Table 5: Nitrogen Dioxide (NO₂) Data Summary for London Monitoring Sites, April to June 2018 ^a

	Background Site				Roadside Site
	Bexley	Bloomsbury	Eltham	Canning Town	Stratford
Max. 1-hr Mean ($\mu\text{g}/\text{m}^3$)	93.4	126.6	72.1	105.7	122.4
No. 1-hr >200 $\mu\text{g}/\text{m}^3$	0	0	0	0	0
Period Mean ($\mu\text{g}/\text{m}^3$)	19.9	37.0	15.5	22.7	26.1
Data Capture (%)	99.8	99.7	99.8	91.8	98.9

^a Data are provisional. Nitrogen oxides concentrations are provided in Appendix 1.

- 3.9 The concurrence of many periods of elevated concentrations at all sites (see Figures 2 and 3) suggests that pollution episodes were due to regional rather than local sources and that changing weather conditions across the region affected the dispersion and dilution of pollutants.

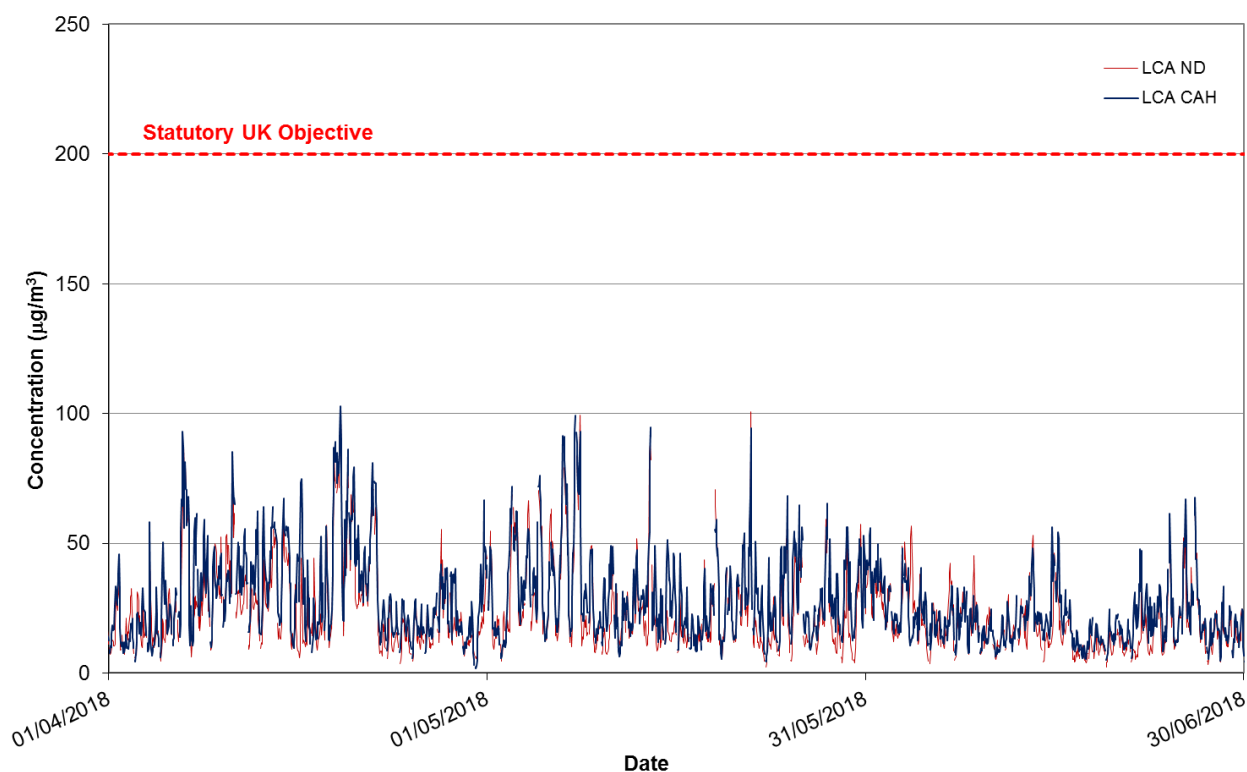


Figure 2: Hourly Mean Nitrogen Dioxide Concentrations at London City Airport, April to June 2018

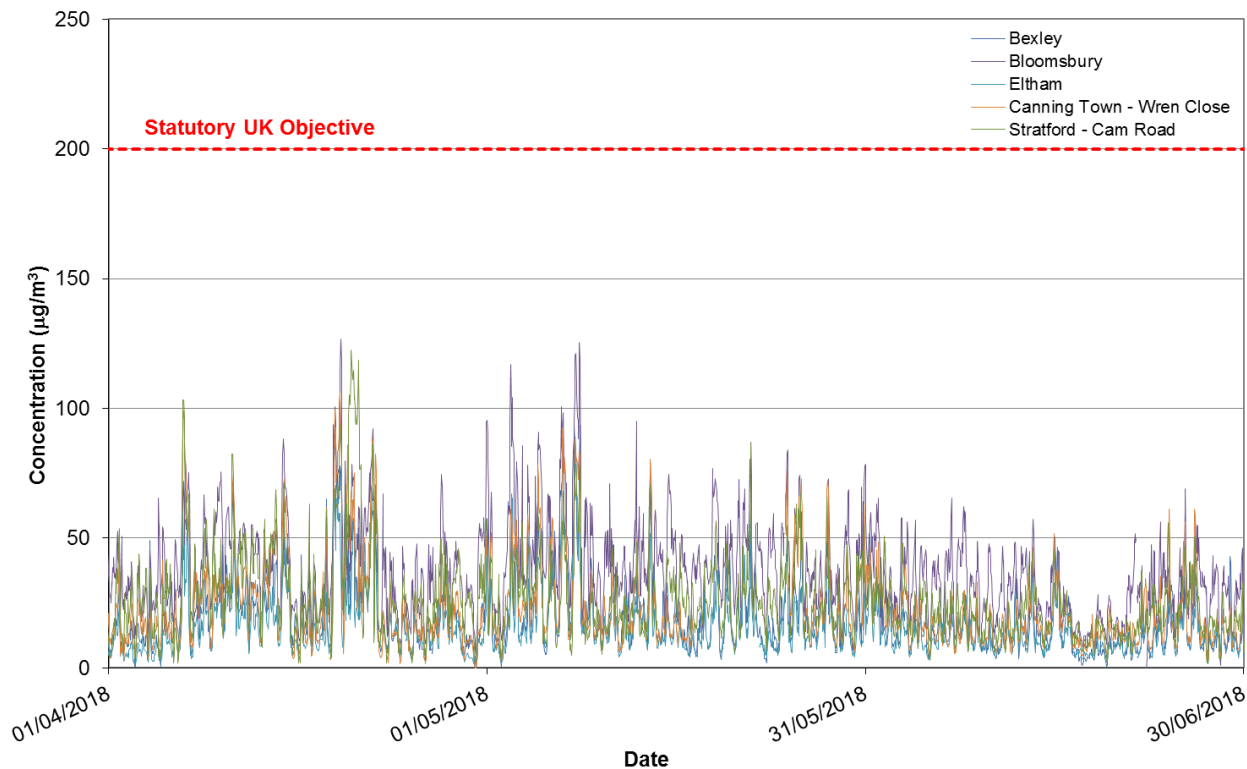


Figure 3: Hourly Mean Nitrogen Dioxide Concentrations at London Monitoring Sites, April to June 2018

Particulate Matter PM_{10}

- 3.10 The PM_{10} results for the period April to June 2018 for the LCA-CAH automatic monitoring station are summarised in Table 6. The 24-hour mean concentrations are plotted in Figure 4. Data capture was 73.0% during the period. The recorded period mean concentration ($21.6 \mu\text{g}/\text{m}^3$) was well below the objective value of $40 \mu\text{g}/\text{m}^3$. There was a single measured exceedance of the 24-hour mean objective level of $50 \mu\text{g}/\text{m}^3$, compared with the 35 exceedances allowed in a year. The 90.4th percentile of daily mean concentrations ($34.8 \mu\text{g}/\text{m}^3$) was below $50 \mu\text{g}/\text{m}^3$.

Table 6: PM_{10} Data Summary for LCA-CAH, April to June 2018

Pollutant	TEOM, VCM-corrected	PM_{10} Objectives
	PM_{10}	
Maximum 24-hour Mean	$50.6 \mu\text{g}/\text{m}^3$	-
Period Mean	$21.6 \mu\text{g}/\text{m}^3$	$40 \mu\text{g}/\text{m}^3$
No. 24-Hour Means $>50 \mu\text{g}/\text{m}^3$	1	$50 \mu\text{g}/\text{m}^3$; no more than 35 exceedances
90.4 th Percentile	$34.8 \mu\text{g}/\text{m}^3$	$50 \mu\text{g}/\text{m}^3$
Data Capture	73.0%	-

- 3.11 Table 7 includes the distribution of the 24-hour mean values into the different pollution bands (DAQI). The majority of 24-hour mean measured PM_{10} concentrations fell into the 'Low' pollution band (98.5%) during April to June 2018; there was also one, 24-hour mean value within the 'Moderate' pollution band (1.5%). There were no 'High' or 'Very High' pollution events.

Table 7: DAQI Bandings for PM_{10} , April to June 2018

Band	Index	LCA-CAH
Very High ^a	10	
High ^a	9	
	8	
	7	
Moderate ^a	6	
	5	
	4	1
Low ^a	3	7
	2	40
	1	18

^a Number of 24-hour mean values falling within band

- 3.12 PM_{10} concentrations for six sites across London for the period April to June 2018 are summarised in Table 8. These sites range from central London (Bloomsbury and Eltham) to outer London

(Bexley), with two in east London (Canning Town and Stratford). The measured period mean concentration at London City Airport ($21.6 \mu\text{g}/\text{m}^3$) was higher than that measured at all other sites, with the exception of Bexley (FDMS) and Canning Town. A single 24-hour mean exceedance of $50 \mu\text{g}/\text{m}^3$ was recorded at the LCA-CAH monitor, as well as at the Canning Town monitor. No exceedances were observed at each of the Bexley (TEOM), Bloomsbury, Eltham and Stratford sites, while 2 exceedances were recorded at the Bexley (FDMS) site. The 90.4th percentile of 24-hour means at London City Airport was higher than those recorded at the Bexley (TEOM) and Eltham sites, but lower than those measured at the Bexley (FDMS), Bloomsbury, Canning Town and Stratford sites.

Table 8: PM₁₀ Data Summary of London Monitoring Sites, April to June 2018 ^a

	Background Site					Roadside Site
	Bexley (TEOM)	Bexley (FDMS)	Bloomsbury (FDMS)	Eltham (FDMS)	Canning Town (FDMS)	Stratford (FDMS)
Maximum 24-hr mean ($\mu\text{g}/\text{m}^3$)	36.7	50.6	45.4	47.9	52.5	46.1
Period Mean ($\mu\text{g}/\text{m}^3$)	15.8	22.0	19.7	18.2	22.3	19.3
No. 24-hr mean $>50 \mu\text{g}/\text{m}^3$	0	2	0	0	1	0
90.4th Percentile	22.7	38.3	35.5	33.4	36.6	35.7
Data Capture (%)	99.7	99.3	99.5	90.7	99.7	62.1

^a All values are reference equivalent. The TEOMs have been adjusted using the VCM.

- 3.13 As with nitrogen dioxide, the concurrence of many periods of elevated PM₁₀ concentrations at all sites (see Figures 4 and 5) suggests that these episodes were due to regional rather than local sources and that changing weather conditions across the region affected the dispersion and dilution of pollutants.

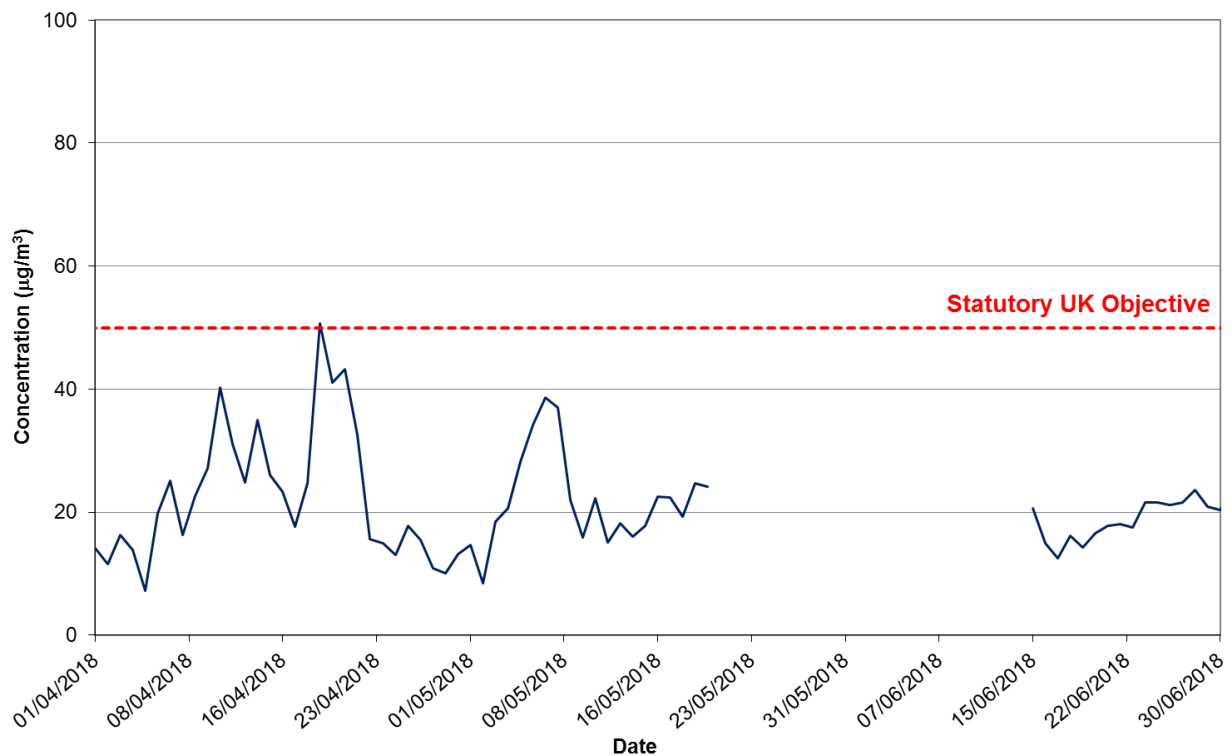


Figure 4: 24-hour Mean PM₁₀ Concentrations at London City Airport (LCA-CAH), April to June 2018

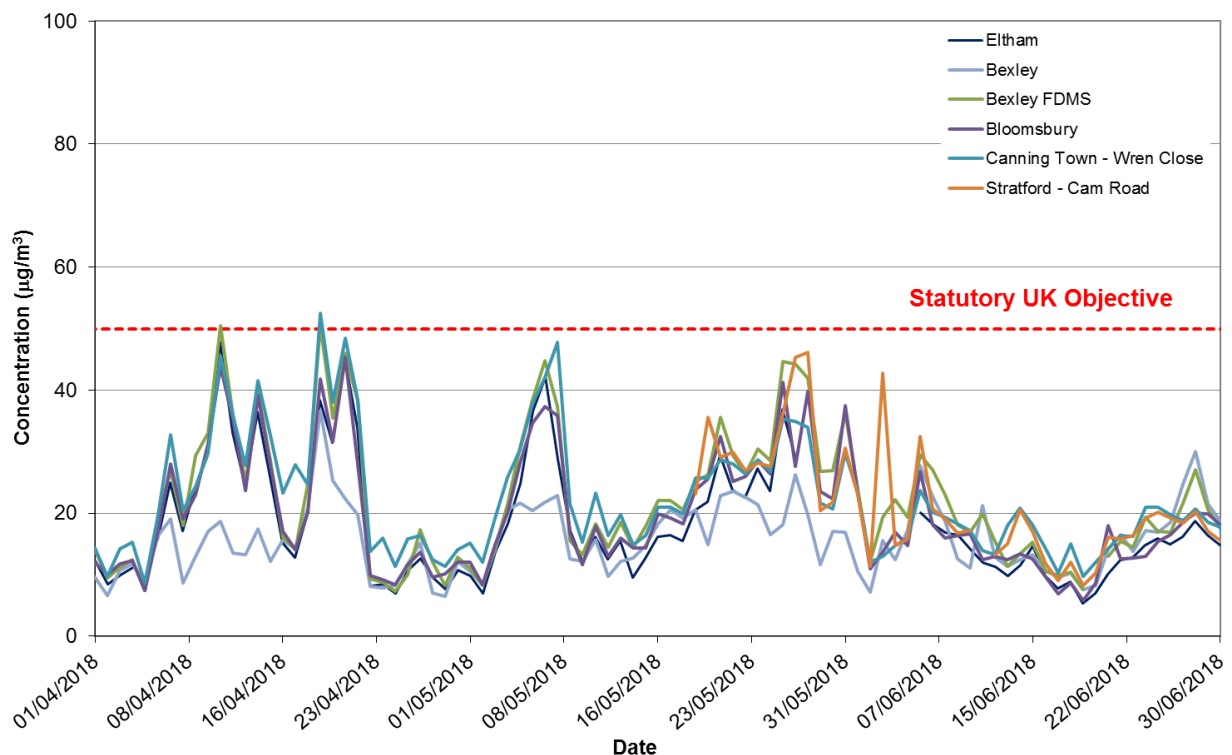


Figure 5: 24-hour Mean PM₁₀ Concentrations at London Monitoring Sites, April to June 2018

Nitrogen Dioxide Diffusion Tube Network

- 3.14 London City Airport also operates a network of passive diffusion tube samplers for nitrogen dioxide. The intent of this network is to establish the wider spatial pattern of nitrogen dioxide concentrations in the area surrounding the Airport. The locations of the monitoring sites are shown in Figure 6, and are described in Table 9. The diffusion tubes are exposed for approximately 4-week intervals. They are supplied and analysed by Gradko Environmental, and are prepared using the 20% TEA in water method. The diffusion tubes record monthly mean concentrations, which have been averaged to give the period mean for April to June 2018.
- 3.15 Due to on-going access issues at the existing diffusion tube monitoring site LCA 03 (adjacent to access road in Silvertown Quay), this site was decommissioned at the start of April 2018. A new site (LCA 20) was initiated at the start of April 2018 adjacent to the same access road, on a lamppost at the roadside of the roundabout with Connaught Bridge.

Table 9: Description of Diffusion Tube Monitoring Sites ^a

Location	Site ID
Lamp post at top of Parker Street, adjacent to housing	LCA 01
Lamp post on Camel Road, adjacent to nearest property on Hartmann Street	LCA 02
Lamp post at waterfront to east end of Newham Dockside	LCA 04
Lamp post on Straight Road, at kerbside	LCA 05
Lamp post on pedestrian walkway adjacent to nearest housing at Gallions Way	LCA 06
Landing Lights	LCA 07
Lamp post on Brixham Street	LCA 08
City Aviation House (triplicate tubes)	LCA 09
Jet Centre – airside	LCA 10
Lamp post at waterfront, eastern end of the University of East London	LCA 11
ILS, to north of runway and south of Royal Albert Dock	LCA 12
Lamp post at north west corner of Newham Dockside	LCA 13
Lamp post on waterfront at western end of Newham Dockside	LCA 14
Lamp post at kerbside (approx 1 m) of Royal Albert Way	LCA 15
Newham Dockside analyser (duplicate tubes)	LCA 18
Lamp post adjacent to roundabout, near to access road in Silvertown Quay. Approx. 1 metre from kerbside of main road.	LCA 20

^a LCA-17 was discontinued from January 2012, as the lamppost on which diffusion tubes were deployed had been removed. LCA-16 and LCA-19 were discontinued from January 2017, as the land on which the sites were located had been vacated for construction works. LCA-03 has been discontinued from April 2018 due to ongoing issues with access.

- 3.16 It is important to note that not all of these monitoring sites represent relevant public exposure for annual mean concentrations of nitrogen dioxide; thus the objectives are not strictly applicable at all

of these sites. For instance, the sites at Landing Lights (LCA 07), the Jet Centre (LCA 10) and the ILS (LCA 12) are located on land that is not generally accessible by the public, or is owned by the Airport. The sites at LCA 04 (at the waterfront of Newham Dockside), LCA 11 (at the waterfront of the University of East London) and LCA 13, 14 and 15 (in the vicinity of Newham Dockside and Royal Albert Way) and LCA 20 would also not represent relevant exposure for annual mean concentrations according to the criteria defined in LLAQM.TG(16)², but are relevant for the 1-hour mean objective. These sites have been included in the study to better understand the spatial pattern of nitrogen dioxide concentrations around the Airport.

- 3.17 Diffusion tubes are known to show systematic bias in relation to automatic (reference) monitors. For this reason, a co-location study has been carried out, with triplicate tubes exposed alongside the inlet to the automatic monitor at LCA-CAH, and with duplicate tubes exposed in close proximity to the inlet of the LCA-ND automatic monitor. Comparison of the matched period results shows that the diffusion tubes were over-reading by an average of 26.9%. An adjustment factor of 0.788 has therefore been applied to all diffusion tube results to ensure that they give the best representation of true concentrations. The results from the triplicate tubes at LCA-CAH and the duplicate tubes at LCA-ND indicate overall “good” precision ($\pm 3.0\%$ and $\pm 4.9\%$ respectively) for the period April to June 2018.
- 3.18 The bias-adjusted results are summarised in Table 10, and also shown in Figure 7. It is not possible to compare the measured concentrations with the objectives, as these apply to a calendar year; however, the annual mean objective value of $40 \mu\text{g}/\text{m}^3$ was not exceeded at any of the monitoring locations during the April to June 2018 period.

² Defra Technical Guidance Note LLAQM.TG(16) suggests that in the case of the annual mean objective, relevant locations should not include kerbside sites (as opposed to locations at the building façade), or any other location where public exposure is expected to be short term.

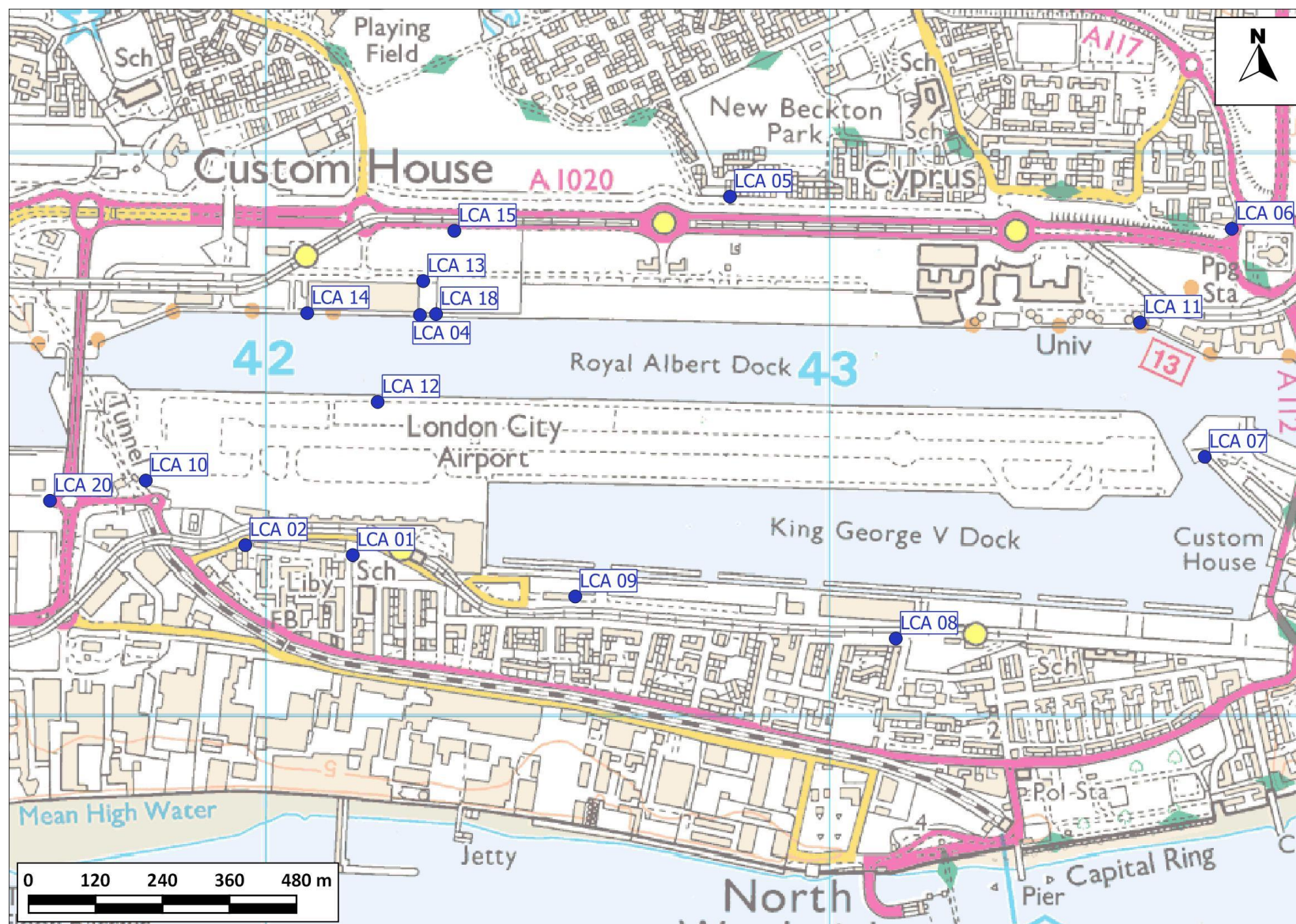


Figure 6: Diffusion Tube Monitoring Locations (blue dots) © Crown copyright and database right 2018. Ordnance Survey licence number 100046099.

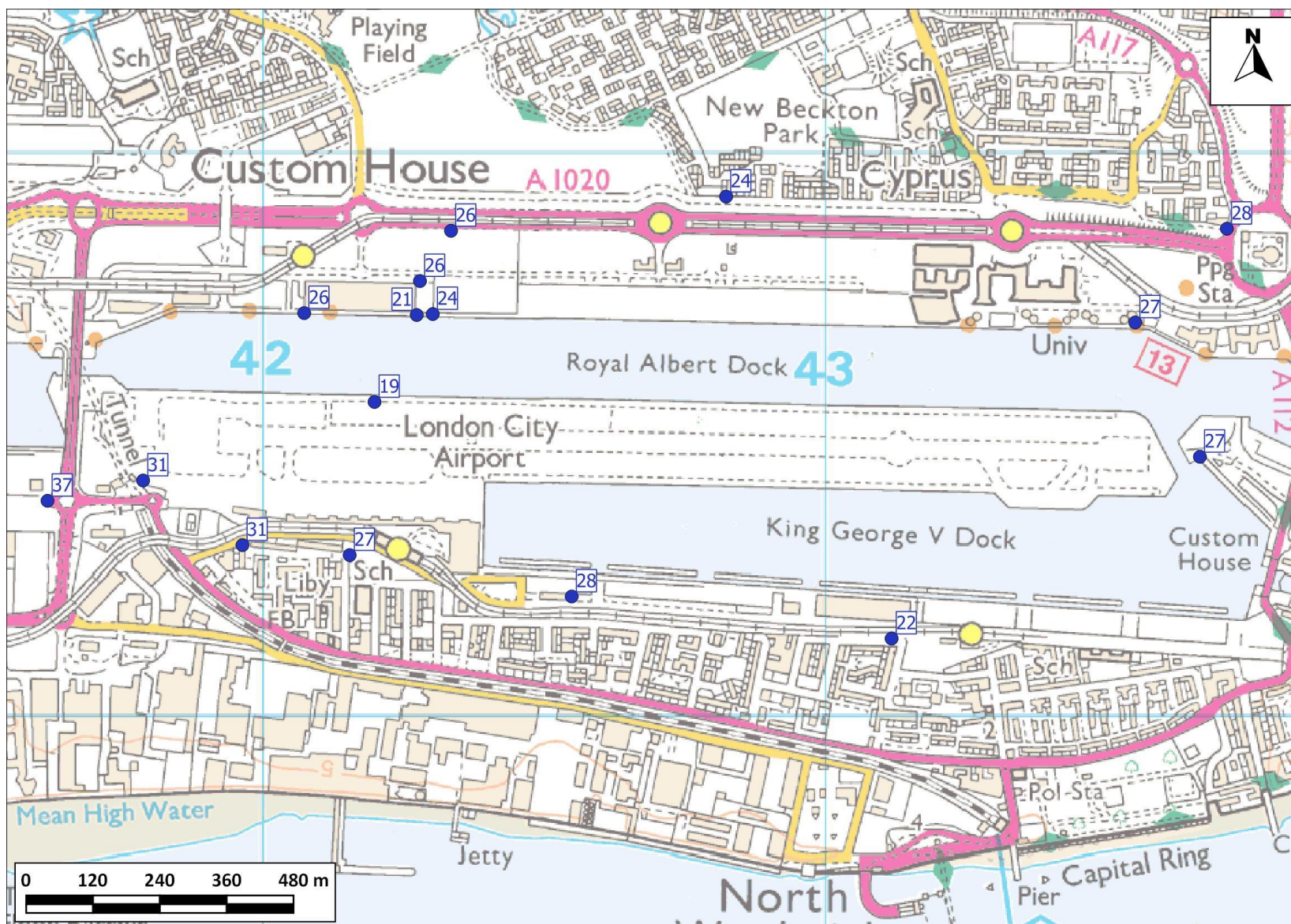


Figure 7: Nitrogen Dioxide Diffusion Tube Results, April to June 2018 ($\mu\text{g}/\text{m}^3$) © Crown copyright and database right 2018. Ordnance Survey licence number 100046099.

**Table 10: Diffusion Tube Data Summary for London City Airport, April to June 2018
(Adjusted for Bias)**

Site ID	Adjusted Value ($\mu\text{g}/\text{m}^3$) ^a
LCA 01	27.4
LCA 02	30.6
LCA 04	21.4
LCA 05	23.6
LCA 06	27.7
LCA 07	26.9
LCA 08	21.8
LCA 09	27.8
LCA 10	31.4
LCA 11	26.7
LCA 12	18.9
LCA 13	26.0
LCA 14	25.7
LCA 15	25.5
LCA 18	23.5
LCA 20	37.1

^a Data have been adjusted using a local bias adjustment factor for April to June 2018 of 0.788. The co-location studies are carried out at LCA-CAH using triplicate tubes and at LCA-ND with duplicate tubes located at the automatic monitor. Diffusion tubes were exposed for the period between 6th April and 9th July 2018.

4 Summary and Conclusions

- 4.1 The April to June 2018 period mean nitrogen dioxide concentrations measured at the LCA-CAH and LCA-ND automatic monitoring sites were $27.3 \mu\text{g}/\text{m}^3$ and $23.0 \mu\text{g}/\text{m}^3$, respectively, and within the range of concentrations measured at five other sites across London (16 to $37 \mu\text{g}/\text{m}^3$).
- 4.2 The April to June 2018 period mean PM_{10} concentration measured at London City Airport was $21.6 \mu\text{g}/\text{m}^3$, when adjusted using the VCM procedure, and was within the range measured at background sites elsewhere in London (16 to $22 \mu\text{g}/\text{m}^3$).
- 4.3 Nitrogen dioxide concentrations measured during the three month period using diffusion tubes at 16 locations around London City Airport were within the range of 19 to $37 \mu\text{g}/\text{m}^3$.

5 References

Defra, 2016. London Local Air Quality Management (LLAQM) Technical Guidance 2016 LLAQM.TG(16).

Defra, 2013, Update on Implementation of the Daily Air Quality Index.

Defra, 2018, Defra Air Quality website. Available at: <http://uk-air.defra.gov.uk/>

KCL, 2018. London Air Quality Network. www.londonair.org.uk

Stationery Office, 2000. Air Quality Regulations, 2000, Statutory Instrument 928.

Stationery Office, 2002. The Air Quality (England) (Amendment) Regulations 2002. Statutory Instrument 3043.

Stationery Office, 2007. The Air Quality Standards Regulations, 2007 (No. 64).

6 Glossary

Exceedance	A period of time where the concentration of a pollutant is greater than the appropriate air quality objective.
FDMS	Filter Dynamics Monitoring System.
LAQN	London Air Quality Network.
LCA-CAH	London City Airport – City Aviation House monitoring site.
LCA-ND	London City Airport – Newham Dockside monitoring site
$\mu\text{g}/\text{m}^3$	Microgrammes per cubic metre.
NO_2	Nitrogen dioxide.
NO_x	Nitrogen oxides (taken to be $\text{NO}_2 + \text{NO}$).
NO	Nitric oxide.
Objectives	A nationally defined set of health-based concentrations for nine pollutants, seven of which are incorporated in Regulations, setting out the extent to which the standards should be achieved by a defined date, taking into account costs, benefits, feasibility and practicality.
PM_{10}	Small airborne particles, more specifically particulate matter less than 10 micrometers in aerodynamic diameter.
Standards	A nationally defined set of concentrations for nine pollutants below which health effects do not occur or are minimal.
TEA	Triethanolamine – absorbent for nitrogen dioxide used in diffusion tubes.
TEOM	Tapered Element Oscillating Microbalance.
VCM	Volatile Correction Model.

A1 Appendix 1 – Nitrogen Oxides Results

A1.1 Nitrogen oxides (NO_x) concentrations, which are essentially the sum of nitrogen dioxide and nitric oxide, are presented in Table A1.1 for the automatic monitoring stations at London City Airport and for five sites across east London in Table A1.2. There are no relevant air quality criteria for nitrogen oxides in an urban area. Nitrogen oxides concentrations are included here for completeness, and because they are relevant for air quality modelling.

Table A1.1 Nitrogen Oxides (NO_x) Data Summary for LCA-CAH and LCA-ND, April to June 2018

Site	LCA-CAH	LCA-ND
Maximum 1-Hour Mean	267 µg/m ³	269 µg/m ³
Period Mean	37.2 µg/m ³	30.7 µg/m ³
Data Capture	95.6%	95.6%

Table A1.2 Nitrogen Oxides (NO_x) Data Summary for London Monitoring Sites, April to June 2018

Site	Bexley	Bloomsbury	Eltham	Canning Town	Stratford
Maximum 1-Hour Mean (µg/m ³)	262.5	249.0	135.7	223.3	179.7
Period Mean (µg/m ³)	24.2	43.9	18.1	30.7	34.3
Data Capture %	99.8	99.7	99.8	33.5	98.9